

# Microinverter YC500A

Solar Microinverter Technology



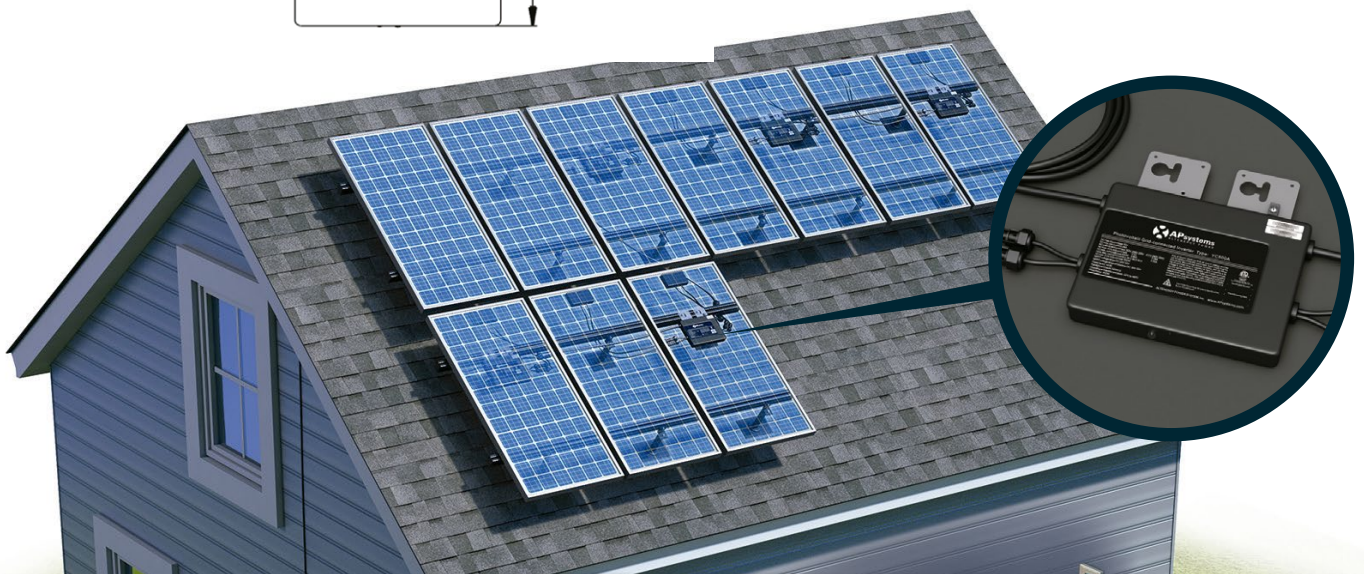
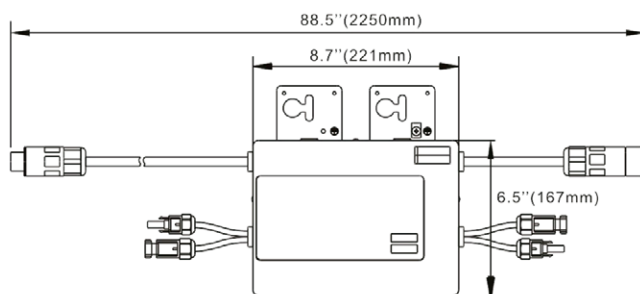
## Feature:

- Single unit connects two solar modules
- Maximum output power 500W
- Individual MPPT for each module
- Up to 14 solar modules (7x YC500s) in a string with a 20A breaker

## Introduction:

Our flagship product, the APsystems K.500A is a grid-tied microinverter with intelligent networking and monitoring systems to ensure maximum efficiency. Highly dependable and cost effective, the VC500A can accommodate PV modules up to 365W with dual MPPT but is ideally suited for modules from 280 to 310W. Half the inverters and half the installation means real cost savings for residential and commercial customers.

## Dimensions



### Technical Data

#### INPUT DATA (DC)

MPPT Voltage Range	22-45V
Maximum Input Voltage	55V
Maximum Input Current	12A X 2

#### OUTPUT DATA (AC)

Rated Output Power	500W
Maximum Output Current	2.08A @ 240V    2.4A @208V
Nominal Output Voltage/Range - 240V	240V/211V-264V*
Nominal Output Voltage/Range - 208V	208V/183V-229V*
Nominal Output Frequency/Range	60Hz/ 59.3-60.5Hz***
Power Factor	>0.99
Total Harmonic Distortion	<3%
Maximum Units Per Branch	7 per 20A @ 240V    6 per 20A @ 208V

#### EFFICIENCY

Peak Efficiency	95.5%
CEC Weighted Efficiency**	95%
Nominal MPP Tracking Efficiency	99.5%

#### MECHANICAL DATA

Storage Temperature Range	-40°F to +185°F (-40°C to +85°C)
Operating Temperature Range	-40°F to +149°F (-40°C to +65°C)
Dimensions (WxHxD) inches	8.75" x 6.5" x 1.1"
Dimensions (WxHxD) mm	221mm x 167mm x 29mm
Weight	5.5 lbs (2.5kg)
Enclosure Rating	NEMA 6
Cooling	Natural Convection - No Fans

#### FEATURES & COMPLIANCE

Communication	Power line (PLC)
Warranty	10 years standard, extendable to 25 years
Emissions & Immunity (EMC) Compliance	FCC PART 15, ANSI C63.4 2003, ICES-003
Safety & Grid Connection Compliance	IEEE1547, CSA C22.2 No. 107.1-01, NEC 2014 690.12, NEC 2017 690.12    ****

\*Default AC output is 240V mode. Programmable to 208V mode.

\*\*CEC registered as Altenergy Power System Inc.

\*\*\*Programmable per customer and utility requirements.

\*\*\*\* Meets the standard requirements for Distributed Energy Resources (UL 1741) and identified with the ETL Listed Mark.

Specifications subject to change without notice – please ensure you are using the most recent version found at [APsystems.com](http://APsystems.com)

